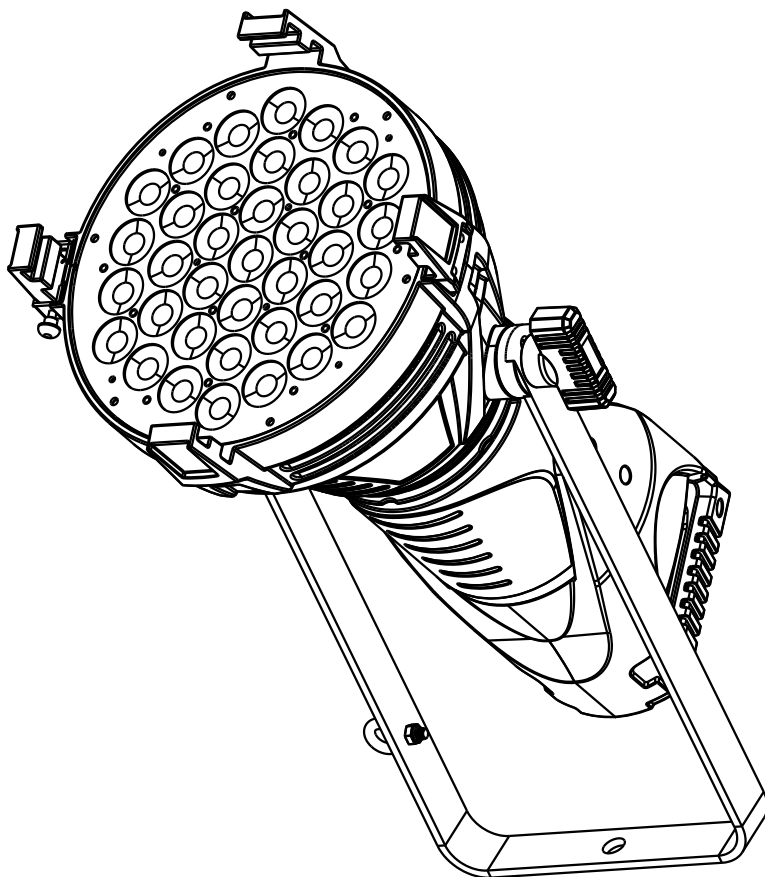


LP-H400

USER MANUAL



Version:1.0



Table of content

1.Open–Package guidelines.....	1
1. 1 Package.....	1
2.Safety instructions.....	1
3.Operating determination.....	3
4.Rigging the fixture.....	4
4.1 Mounting.....	4
4.2Installing the Clamps.....	4
4.3 Power supply connection and cut off.....	5
4.4 Power Connection.....	5
4.5 DMX–512 connection/connection between fixtures.....	6
5.Description of the device.....	7
6.Dimension.....	8
7.Display control.....	9
7.1 Navigation in the Menu	9
7.2 Menu Maps.....	9
8.DMX protocol.....	10
9.Maintance and cleaning.....	10
10.Electric equipment specification.....	10
10.1 Electrical paramters.....	10
10.2 Weight and dimensions.....	10
10.3 Channel Characteristics.....	11
10.4 Menu Function.....	11
10.5 light table.....	11
11.Electronic drawing.....	12

Congratulations on choosing our products! Please carefully read this instruction manual in its entirety and keep it well for using reference. This manual contained about the installation and the relative using information of this products. Please refer to this manual's relative instruction when using this equipment.

1.Open–Package guidelines

This equipment is made of new style,high intensity plastic.It fully shows the modern times light charac teristic with beauty struture. And it is made accord to CE standard. Fully agree with the internation standard of DMX512 agreement.

When receive the product,please be careful to take and put,check if the product has damage or not because of transportation, and check the following parts:

- | | |
|--------------------|---------------------|
| 1.Signal cable-1PC | 2.Safy cable-3PC |
| 3.User Manval-1PC | 4.Omega holder-1PCS |
| 5.Power cable-1PC | 5.Service card-1PC |

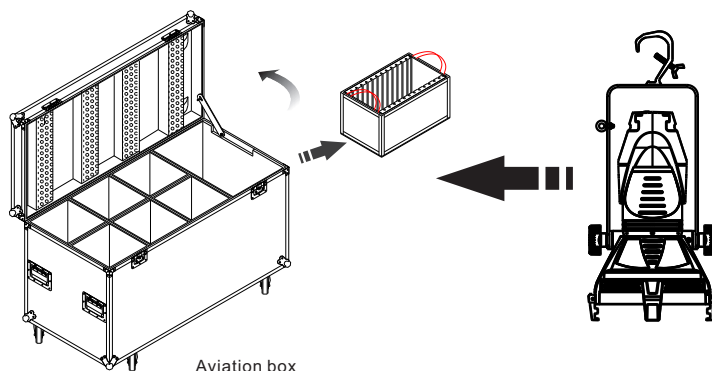
1.1 Package

Unpacking the fixture

- 1.Open the flight case cover
- 2.With one person on each side, lift the fixture out of the flight case.

Packing the fixture

- 1.Disconnect the fixture from power and allow it to cool.
- 2.Place the fix ture in the bottom of the flight case, and cover the case without forcing.



2.Safety instructions

Every person involvd with installation and maintenance of this device to:

- Be qualified
- Follow the instructions of this manual.

CAUTION!

*Be careful with your operations.
With a high voltage you can suffer
a dangerous electric shock when touching the wires!*

This device has been shipped with our premises in absolutely perfect condition. In order to maintain this condition and to ensure a safe operation, it is absolutely necessary for the user to follow the safety instructions and warning notes written in this manual.

Important:

- The manufacturer will not accept liability for any resulting damages caused by the nonobservance of this manual or any unauthorized modification to the device.
- Please consider that damages caused by manual modifications to the device are not subject to warranty.

- Never let the power-cord come into contact with other cables! Handle the power cord and all connections with particular caution!
- Make sure that the available voltage is not higher than stated on the rearpanel.
- Always plug in the power plug least. Make sure that the power-switch is set to off-position before you connect with them with particular caution!
- Make sure that the power-cord is never crimped or damaged by sharp edges. Check the device and the power-cord from time to time.
- Always disconnect from the mains, when the device is not in use or before cleaning it.
- Only handle the power-cord by the plug. Never pull out the plug by tugging the powercord.
- This device falls under protection class I. Therefore it is essential to connect the yellow/green conductor to earth.
- The electric connection, repairs and servicing must be carried out by a qualified employee.
- Do not connect this device to a dimmer pack.
- Do not switch the fixture on and off in short intervals as this would reduce the lamp's life.
- Do not touch the device's housing bare hands during its operation (housing becomes hot)!
- For replacement use lamps and fuses of same type and rating only.

Eye damage!

Avoid looking directly into the light source (meant especially for epileptics)!



➤ Minimum distance of illuminated objects

The projector needs to be positioned so that the objects hit by the beam of light are at least 2.5 metres from the lens of the projector.

t_a 40°C

➤ Maximum ambient temperature

Do not operate the fixture if the ambient temperature (T_a) exceeds 40°C (104°F).

t_c 90°C

➤ Temperature of the external surface

The maximum temperature that can be reached on the external surface of the fitting, in a thermally steady state, is 90°C (194°F).

IP20

➤ IP20 protection rating

The fitting is protected against penetration by solid of over 12mm (0.47") in diameter (first digit 2), but not against dripping water, rain, splashes or jets of water (second digit 0).



➤ Indoor use only



➤ Not suitable for household illumination



Risk Group 2
According to
EN62471

➤ Photobiological Safety

CAUTION. Possibly hazardous optical radiation emitted from this product. Do not stare at operating lamp. May be harmful to the eyes.



➤ Light collimation system

This product contains internal light collimation system. Avoid intense light from any angle.



➤ The products to which this manual refers comply with the European Directives pursuant to:

- 2006/95/EC - Safety of electrical equipment supplied at low voltage (LVD)
- 2004/108/EC - Electromagnetic Compatibility (EMC)
- 2011/65/EU - Restriction of the use of certain hazardous substances (RoHS)
- 2009/125/EC - EcoDesign requirements for Energy-related Products (ErP)



➤ Protection against electrical shock

Connection must be made to a power supply system fitted with efficient earthing (Class I appliance according to standard EN 60598-1). It is, moreover, recommended to protect the supply lines of the projectors from indirect contact and/or shorting to earth by using appropriately sized residual current devices.



➤Disposing

This product is supplied in compliance with European Directive 2012/19/EU-Waste Electrical and Electronic Equipment (WEEE) .To preserve the environment please dispose/recycle this product at the end of its life according to the local regulation.



➤Battery

This product contains a rechargeable lead-acid or lithium iron tetrphosphate battery. To preserve the environment,please dispose the battery at the end of its life according to the regulation in force.

3.Operating determinations

- This device for LED lighting,used to create the beam effect.
- If the device ha been exposed to drastic temperature fluctuation(e.g.after transportation),do not weitch it on immediately.The arising condensation water might damage your device,Leave the device switched off until it has reached room temperature.
- Never run the device without lamp!
- Do not shake the device,Avoid brute force when installing or operating the device.
- Never life the fixture by holding it at the projectorhead, as the mechanics may be damaged. Always hold the fixture at the transport handles.
- When choosing the installation-spot,please make sure that the device is not exposed to heat,moisture or dust.There should not be any cables lying around.You endanger your own and the safety of others!
- The minimum distance between light output and the illuminated surface must be more than 0.2 meters.
- Make sure that the area below the installation place is blocked when rigging,derigging or servicing the fixture.
- Always fix the fixture with an appropriate safety rope, Fix the safety rope at the correct holes only.
- Operate the fixture after having checked that the housing is firmly closed and all screws are tightly fastened.
- The lamp must never be ignited if the objective-lens or any housing-cover is open, as discharge lamps may explode and emit a high ultraviolet radiat, which may cause burns.
- The maximum ambient temperature 40° C must never be exceeded.
- Operate the device only after having familiarized with its functions. Do not permit operation by persons not qualified for operating the device. Most damages are the result of unprofessional operation!
- Please use the original packaging if the device is to be transported.
- Please consider that unauthorized modifications on the device are forbidden due to safety reasons!.
- If this device will be operated in any way different to the one described in this manual, the product may suffer damages and the guarantee becomes void.Furthermore, any other operation may lead to dangers like short-circuit,burns, electric shict,burns due to ultraviolet radiation,lamp explosion,crash etc.

4. Rigging the fixture

4.1 Mounting



Pay attention to the regulations of CE.

Installation by qualified staff to complete.

☞ For the various mounting positions of the FIXTURE (standing on the floor, sideways or hanging different accessories kits are available.

☞ Through this a safe and firm installation is assured.

☞ You'll find special connectors on the bottom side of the system which are put to use here.

4.2 Installing the Clamps

Please consider the respective national norms during the Installation! The installation must only be carried out by an authorized dealer!

The installation of the projector has to be built and constructed in a way that it can hold 10 times the weight for 1 hour without any harming deformation.

The installation must always be secured with a secondary safety attachment, e.g. an appropriate catch net. This secondary safety attachment must be constructed in a way that no part of the installation can fall if the main attachment fails.

When servicing the fixture staying in the area below the installation place, on bridges, under high working places and other endangered areas is forbidden.

The operator has to make sure that safety-relating and machine-technical installations are approved by an expert before taking into operation for the first time and after changes before taking into operation another time.

The operator has to make sure that safety-relating and machine-technical installations are approved by an expert after every four years in the course of an acceptance test.

The operator has to make sure that safety-relating and machine-technical installations are approved by a skilled person once a year.

The projector should be installed outside areas where persons may walk by or be seated.

Important! Overhead rigging requires extensive experience CE, including (but not limited to) calculating working load limits, installation material being used, and periodic safety inspection of all installation material and the projector. If you lack these qualifications, do not attempt the installation yourself, but instead use a professional structural rigger. Improper installation can result in bodily injury and or damage to property.

The projector has to be installed out of the reach of people.

If the projector shall be lowered from the ceiling or high joists, professional trussing systems have to be used. The projector must never be fixed swinging freely in the room.

Caution Projectors may cause severe injuries when crashing down! If you have doubts concerning the safety of a possible installation, do not install the projector!

Before rigging make sure that the installation area can hold a minimum point load of 10 times the projector's weight.

The projector can be placed directly on the stage floor or rigged in any orientation on a truss without altering its operation characteristics.

For overhead use, always install a safety-rope that can hold at least 10 times the weight of the fixture. You must only use safety-ropes with screw-on carabines. Pull the safety-rope through the two apertures on the bottom of the base and over the trussing system etc.



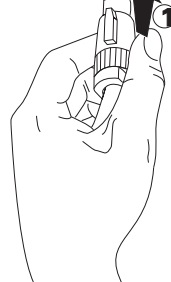
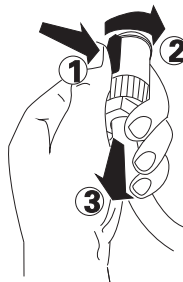
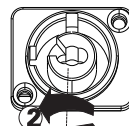
Warning: it is necessary to make sure that the installation location is perfectly appropriate, and the installation location is safe and reliable.

4.3 Power supply connection and cut off

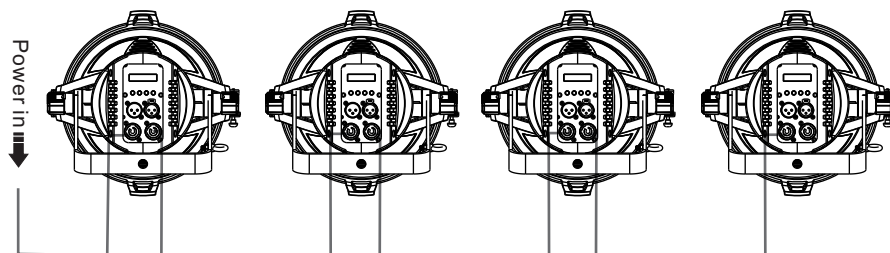
Connect the light source to the main power source with the plug of the power cord, or cut off the power supply:

Connection: according to procedures, the power plug and socket is inserted into the groove one on one alignment, rotation.

Cut off: according to procedures, press the button on the rotating plug, pull out.



Warning: The maximum connecting is less than 4 pcs to make sure the normal life time of the lighting fixture.



4.4 Power Connection

If you wish to change the power supply settings, see the chapter appendix Connect the fixture to the mains with the enclosed power cable and plug.

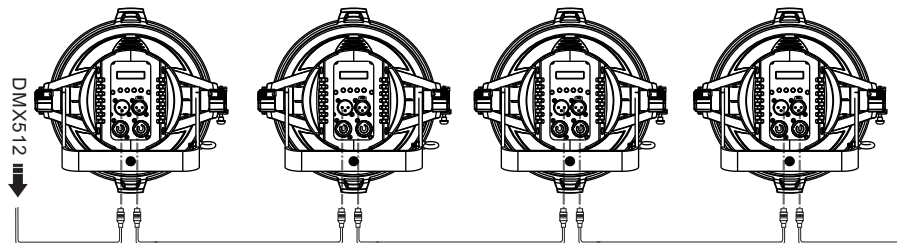
CABLE(EU)	CABLE(US)	Pin	INTERNATIONAL
Brown	Black	Live	L
Light blue	White	Neutral	N
Yellow/Green	Green	Earth	



Warning: please verify the power of the power supply equipment prior to the connection! Earth wire must be grounded!

4.5 DMX-512 connection/connection between fixtures

Only use stereo shielded cable and 3-pin XLR-plugs and connectors in order to connect.



Caution

At the last fixture, the DMX-cable has to be terminated with a terminator. solder a 120 resistor between signal(-) and Signal (+) into a 3-pin XLR-plug and plug it in the DMX-output of the last fixture.

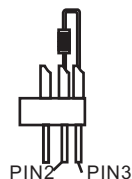
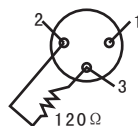
DMX output 3-pin XLR socket DMX input 3-pin XLR socket



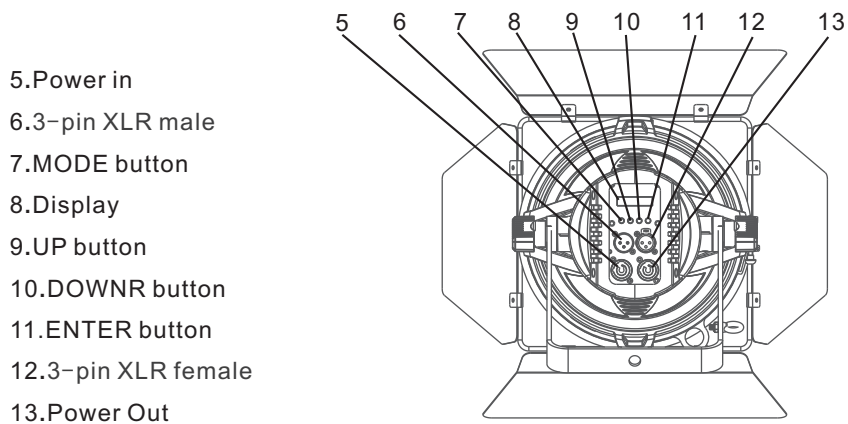
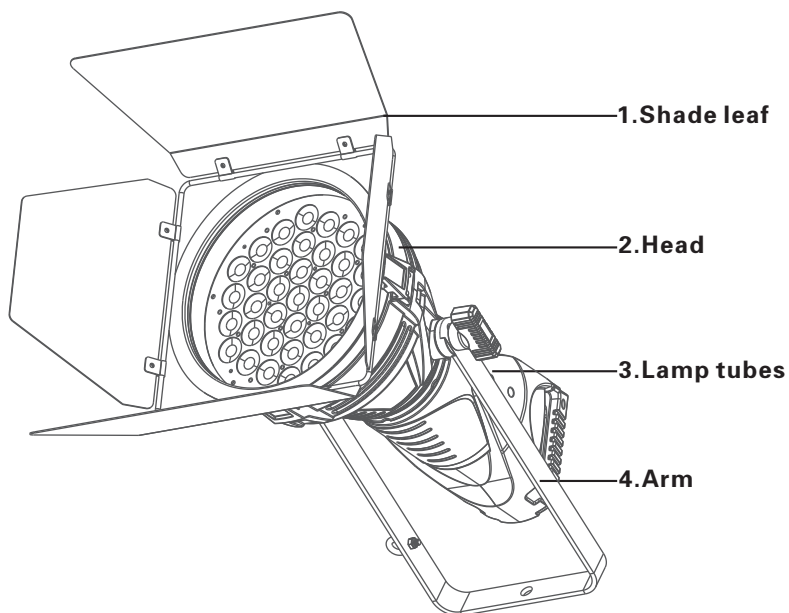
1: Ground
2: Signal (-)
3: Signal (+)

DMX Terminator Diagram

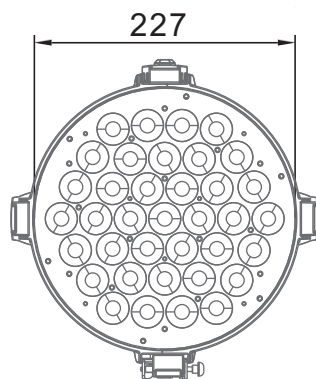
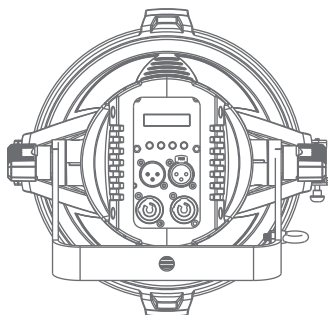
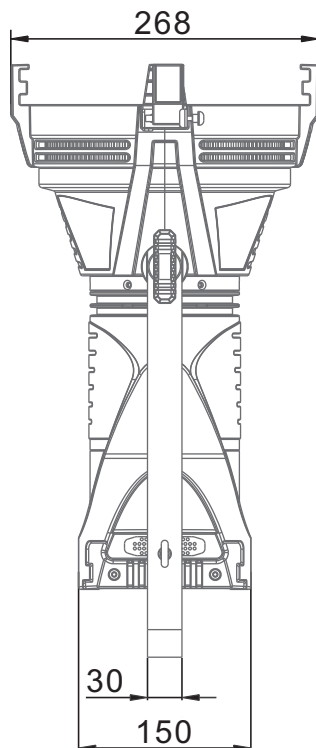
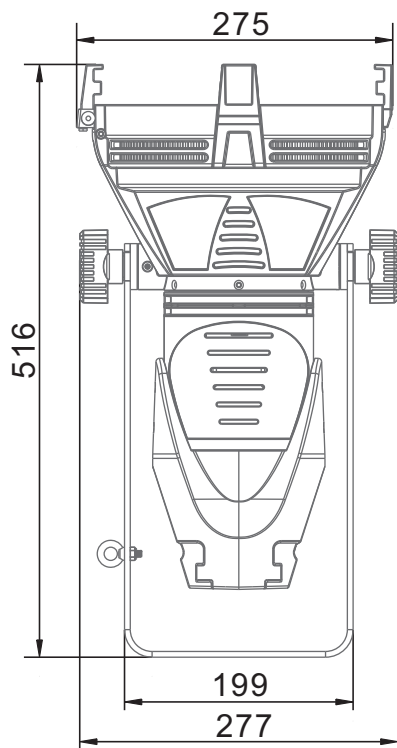
-For installations where the DMX cable has to run a long distance or is in an electrically noisy environment it is recommended to use a DMX terminator. This helps in preventing corruption of the signal by electrical noise. The DMX terminator is simply an XLR plug with a 120Ω resistor connected between pins 2 and pins 3, which is then plugged into the output XLR socket of the last fixture in the chain.



5.Description of the device



6.Dimension



7.Display control

7.1 Navigation in the Menu

Using the buttons or touch screen, and this can be simply and easily set the address code and functions code.

If you view or modify the lighting feature set, then press ENTER button, the display will enter the menu interface. Both there is sub menu corresponding to the functional operation of the main menu. Each of the menus is representative of the specific features of the lamp. The specific contents shows as the table menu below.

Set or browse lighting function, press UP or DOWN button.

Press ENTER to save your changes or enter the submenu. Press the UP or DOWN can change the numerical (increase or decrease in value).

Press the MODE button to return to menu. Set a time 0 to 10 minutes automatically exit menu interface and close the screen.

If there is a channel failure in the reset process, the LCD screen will display the corresponding fault information, can be compared to the information content of the lamp to be amended, if in doubt, consult the relevant technical personnel. – (Error List)

CODE #	ERRO INFO	CHECK MEASURMENT	NOTE
E01	SpiErr	Check the communication signal 25Q16 flash chip & memory IC	RESET ERROR
E02	PrgErr 1	Display firmware loading failed, load it again.	
E03	BD1Err	Check the communication signal& welding of communication chip	
E04	McuBusErr		
E05	BD1CrcErr	LED driver firmware loading failed, load it again.	
E06	Temp Err	Check the welding of Temp IC	

7.2 Menu Maps

				Remark
Set Up	DMX Address	001~XXX		
	Fixture Id	0001~999		
	Channel Mode	Mode 1	1~4	Default 1
		Mode 2	1~6	
Personality	Auto Lamp ON	ON/OFF		Default ON
	DMX Lamp	ON/OFF		Default ON
	Display	DSP.Sleep	0~10m	
		DSP.Contrast		
Information	Fixture Hours	XXXXX h XX m		Total working hours
	Reset Times	Input Password XXXX		
	DMX Monitor			
	Temperature	xxC		
	Error List			Error details
	DMX Diagnostic			DMX Diagnostic
Manual Control	Channel			Chanel Testing
Advanced	Factory	ON/OFF		Reset to original parameters

8.DMX protocol

Mode 1	Mode 2	Fade Type	Function	Dmx Value
1	1	Dimmer	Dimmer 0–100%	0–255
	2	Dimmer Fine	Dimmer Fine 0–100%	0–255
2	3	Strobe	No function (shutter Close)	0
			Strobe effect slow to fast	1–95
			No function (shutter open)	96–127
			Pulse–effect in sequences	128–159
			No function (shutter open)	160–191
			Random strobe effect slow to fast	192–223
3	4	Linear CTO	No function (shutter open)	224–255
4	5	Fixed CTO	5200–2500K	0–255
			No function	0–15
			5000	16–45
			4500	46–75
			4200	76–105
			3900	106–135
			3600	136–165
			3300	166–195
			3000	196–225
			2700	226–255
	6	Dimming curve	No function	0–9
			linear	10–19
			gamma1.5	20–29
			gamma1.0	30–39
			curve s	40–49
			No function	50–255

9.Maintance and cleaning

DANGER: Disconnect from the mains before starting any maintenance work.

It is absolutely essential that the fixture is kept clean and that dust, dirt and smoke fluid residues must not buildup on or within the fixture. Otherwise, the fixtures light-output will be significantly reduced. Regular cleaning will not only ensure the maximum light-output, but will also allow the fixture to function reliably through out its life. A soft lint-free cloth moistened with any good glass cleaning fluid is recommended, under no circumstances should alcohol or solvents be used!

The front objective lens will require weekly cleaning as smoke-fluid tends to building up residues, reducing the light-output very quickly. The cooling-fans should be cleaned monthly.

The gobos may be cleaned with a soft brush, The interior of the fixture should be cleaned at least annually using a vacuum-cleaner or an air-jet.

Maintenance and maintenance of the operation, please contact the manufacturer or distributor.

10. Electric equipment specification

10.1 Electrical paramters

SOURCE: White LED-10W

POWER: 400W

VOLTAGE: AC100-240V 50/60HZ

10.2 Weight and dimensions

Dimensions : (WXHXD) : 275X268X516mm

NET WEIGHT: 6.8Kg

Dimensions (Carton Package) : 630X375X395mm

WEIGHT (Carton Package) : 12Kg

Dimensions (Flight Case -6 lights): 1193X555X853mm

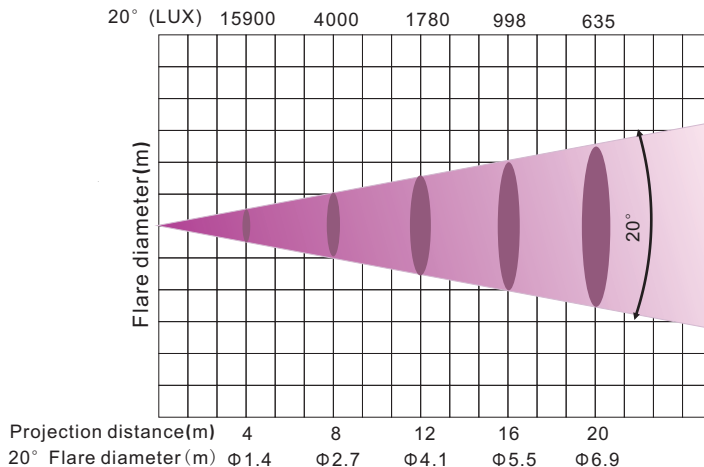
10.3 Channel Characteristics

1. Channel: 4/6 DMX-512.
2. 37PCS LED
3. dimmer: Full range dimming.
4. Random strobe effect.

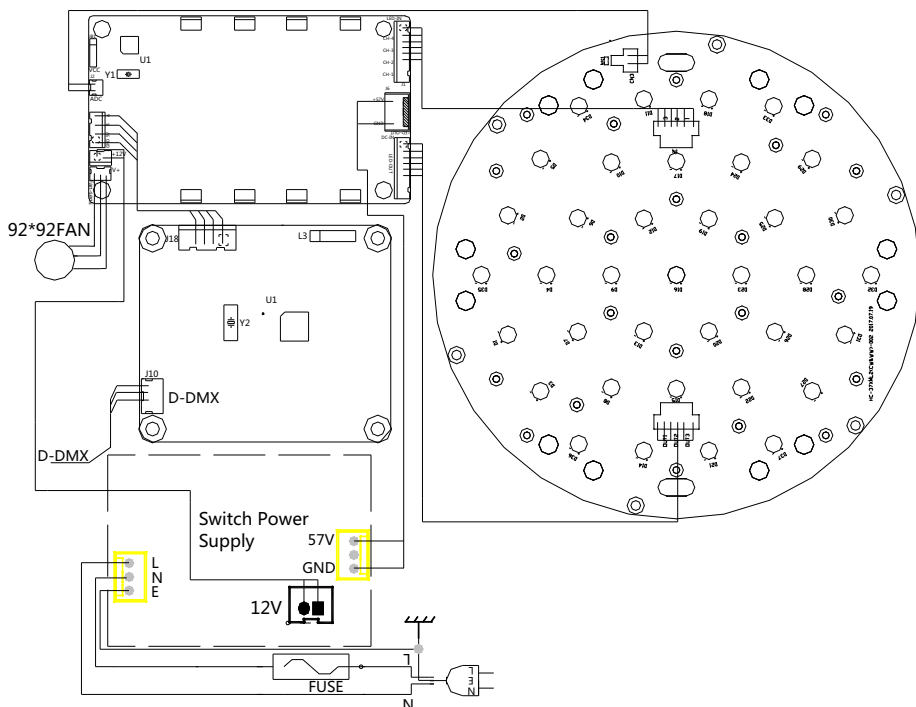
10.4 Menu Function

1. LCD display graphic.
2. Each DMX value displayable.
3. Monitor could ON/OFF automatically.
4. Show fixture, lamp use time.
5. After the DMX signal is disconnected, the display will be bright and dark.
6. With DMX Software upgrade.
7. With RDM function.

10.5 light table



11.Electronic drawing



Note: The above contents for reference only and is subject to change without prior notice, please take specification you have on hand and our company reserves the final right of interpretation.



<http://www.jollylighting.com>

Guangzhou hongcai stage equipment Co.,Ltd

Tel:+862084558833 Fax:+862084559699

Email:info@jollylighting.com P.C:511450

Add:Building2,No.32,Changsha Street, Shachong Village,shiji Tow.Panyu District,Guangzhou,China